



**ST MODWEN'S CATHOLIC
PRIMARY SCHOOL**
Excellence For All Through Jesus' Love

St Modwen's Catholic Primary School, Tutbury Road Burton-on-Trent, Staffs. DE13 0AJ.

Head Teacher: Mrs Andrea Sherratt

Tel 01283 247565

Email office@st-modwens.staffs.sch.uk

Grade 2 Midday Supervisors

4 x Fixed-Term, Term-time Grade 2 (SCP 2-3 £18,516-£18,887 pro-rata) –

6.25 hours per week, Fixed term contract Sept 2022 – 31.8.2023

External Advertisement

Vacancy: 3 x Fixed-Term, Term-time only Midday Supervisors (Grade 2) Required from Sept 22 – 31.8.2023:

External Appointment: The Governors are seeking to appoint 4 x dedicated, talented Grade 2 Midday Supervisors St Modwen's Catholic Primary School is a friendly and welcoming school which serves a supportive, Catholic community in the parish of Ss Mary and Modwen, Burton. The school is committed to promoting application of strong gospel values.

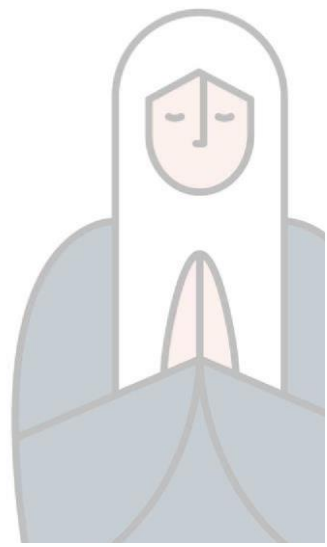
We are looking for enthusiastic, flexible, motivated and creative individuals to join our well-established team of Midday Supervisors. You will work alongside our highly qualified, dedicated and aspirational staff team to provide a range of exciting, inspirational lunchtime activities and lunchtime supervision for our children. If you would like to join our St Modwen's family in delivering life changing learning and development opportunities for our children we would welcome an application from you.

For an application form along with information regarding the responsibilities of the post, job description and person specification, please see our school [St Modwen's Catholic Primary School - Home \(stmodwens.staffs.sch.uk\)](http://stmodwens.staffs.sch.uk). Visits to school are warmly welcomed and subject to current school covid-19 control measures– please contact the school office to make arrangements

CLOSING DATE: Noon Friday 9th September 2022

INTERVIEWS: Monday 12th September 2022

The Governors are committed to safeguarding and promoting the welfare of our children and expect all staff to share this commitment. The appointment will be subject to an enhanced CRB check and supportive references.





**ST MODWEN'S CATHOLIC
PRIMARY SCHOOL**
Excellence For All Through Jesus' Love

