



## RE

Write a diary entry as somebody from one of our Old Testament stories.

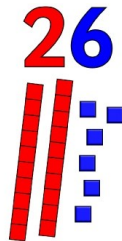
- Noah's Ark
- Abraham and Isaac
- Daniel and the Lion's Den

## English

- Write a description of different places that explorers might visit.
- Write a letter home from an explorer.
- Write a story about an expedition to the North or South Pole..

## Maths

- Practise partitioning numbers to 100.
- Look at different numbers to 100, can you represent these numbers in different ways? E.g. tens and ones, using objects, using pictures.
- Practise counting in 2s, 5s, 10s and 3s.



## Geography.

- Research the climate of the North and South Poles. How are they different to the UK?
- Label the North and South Poles on a world map.

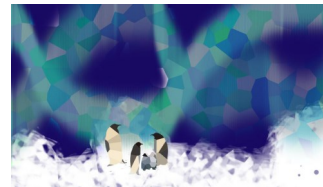
## Half-Termly Activity Grid

## Year 2 Autumn 1

## Topic Explorers.

## Art

Can you create a picture of the South Pole? You can create it in any way you like. Paint, felt tips or crayon! Why not try to use recycled materials to create a collage.



## Reading

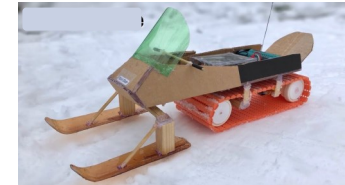
- Summarise your reading book in 5 sentences.
- Write a letter from one of the characters in your book to another character.



## Design and Technology

- Create a vehicle for an explorer to travel in. You could use different recycled materials.

Think carefully about the purpose of your vehicle and where it will be going. You need to make sure your design is fit for purpose.



## Science

Design a healthy meal plan for the week. Remember to include all of the different food types and think carefully about the traffic light ratings.

	Fat	Saturates	Sugar	Salt
What is <b>HIGH</b> per 100g	Over 17.5g	Over 5g	Over 22.5g	Over 1.5g
What is <b>MEDIUM</b> per 100g	Between 11.8 and 17.5g	Between 4.8 and 5g	Between 11.8 and 22.5g	Between 0.31 and 1.5g
What is <b>LOW</b> per 100g	2g and below	1.5g and below	5g and below	0.3g and below

Based on guidelines by the Department of Health, under the terms of the Open Government Licence.